

**ATTENTION!**  
**READ THE USER'S MANUAL BEFORE USING!**

- ⚠ CAUTION – Contents hot.
- ⚠ RISK OF ACCIDENT. Never press hard.
- ⚠ Keep hands and face clear of lid hole when handling.
- ⚠ Check if the body base, the filter and the lid are tight enough before using.
- ⚠ Keep out of the reach of children.
- ⚠ Store the plunger and the body separately to preserve the lifetime of the sealing ring.

If you are having trouble using PRESSCA, please contact our team. We will help.

[www.pressca.com.br](http://www.pressca.com.br)

📘 facebook.com/pressca

📷 instagram.com/presscabr

☎ +55 47 3521 9974



**PRESSCA®**  
 Portable Coffee Maker and Tea Infuser

Congratulations. You have purchased an innovative and efficient product for brewing coffee or making tea, proudly designed and manufactured in Brazil.

Pressca is produced in material suitable for the preparation and storage of food and beverages (BPA free).

The material used for the filtration also influences the drink result. The filter used in Pressca is made in the highest quality stainless steel.

**BEFORE THE FIRST USE**

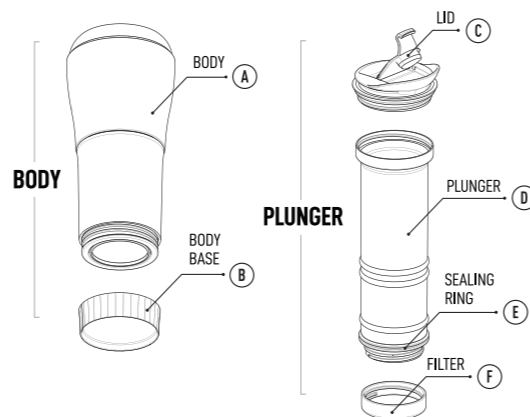
It is recommended to disassemble and wash all parts of the product before its first use (see the topic "Disassembling and Assembling the PRESSCA"). For protection, the plunger sealing ring comes wrapped in a plastic film. When disassembling the coffee maker for the first time for cleaning, remove and dispose this plastic film.

Pressca consists of two main parts: the body – container for placing coffee or tea and water, and the plunger – which will filter and store the drink already prepared and ready to be consumed.

The body is the external part and the plunger is the inner part. To remove the plunger, open the lid and gently pull it upwards, always vertically.

If this operation is difficult, apply a slight twist clockwise on the plunger while pulling it up and it will come out easily.

**PARTS**



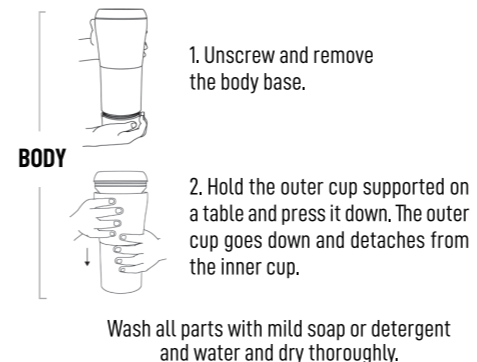
**DISASSEMBLING THE PRESSCA**

Before brewing your first coffee or tea, it is important to disassemble and wash all parts of the coffee maker.

**PLUNGER**

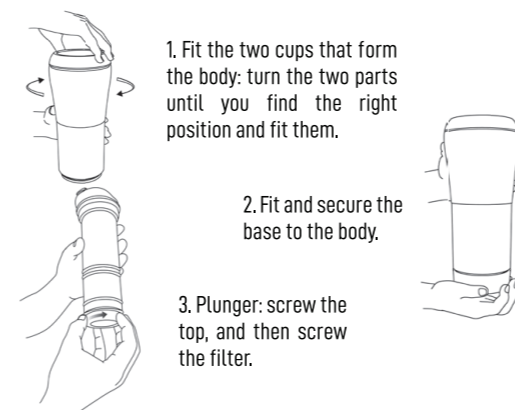
- Unscrew the top.
- Unscrew the filter in the bottom.
- Remove and dispose the plastic film that wraps the plunger sealing ring.

You need to detach the two cups that form the body:



**ASSEMBLING THE PRESSCA**

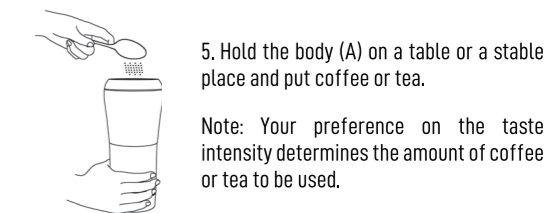
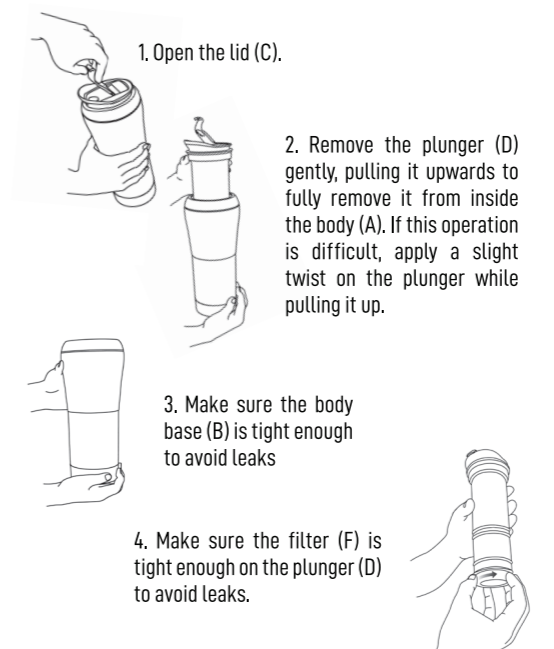
After washing and before brewing, make sure you have tightened all parts enough.



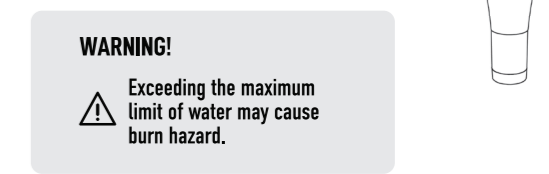
Check if the plunger sealing ring is well fitted and aligned. For a proper use and to avoid leaks, make sure the body base, the lid and the filter are firmly tightened.

**BREWING COFFEE / MAKING TEA**

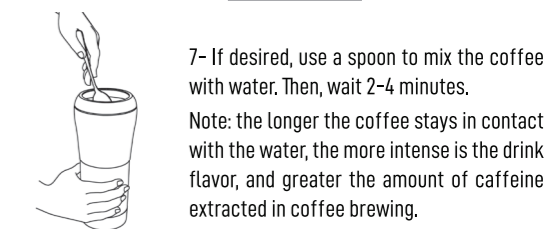
- ⚠ WARNING**
- Risk of accident: Never press hard – read Tips at page 8.
  - Always open the lid ( C ) before pulling the plunger upwards or pressing it down.
  - Check if the body base, the filter and the lid are tight enough before using.
  - Keep hands and face clear of lid hole when handling.
  - Keep out of the reach of children.



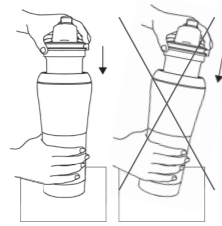
5. Hold the body (A) on a table or a stable place and put coffee or tea. Note: Your preference on the taste intensity determines the amount of coffee or tea to be used.



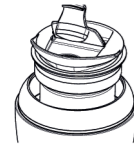
Note: Coffee should not be brewed with boiling water (above 90°C), in order not to change all coffee characteristics. The right time to use the water is when it is near boiling, or when the kettle starts "sizzling".



8. Hold the body (A) steadily, safely, and **vertically**. Then, insert the plunger (D) with the **lid open** (C) inside the body – always vertically.



From that point, with the lid open to relieve the pressure, push the plunger gently and vertically down.



9. Ready! Note that the plunger will not go down until the end as this is where coffee or tea remains pressed. This makes cleaning easier – see step 4 of Cleaning on page 9.

#### RISK OF ACCIDENT

Never press hard.



**CAUTION – CONTENTS HOT**  
Check temperature before drinking.

Note that the filtered and ready to drink coffee or tea will be inside the plunger. While inserting the plunger, please check if there is coffee between the plunger and the body, above the sealing ring. In this case, remove the plunger carefully and repeat the operation. All liquid should be only inside the plunger.



#### RISK OF ACCIDENT

Press the plunger gently. The use of force might cause hot liquid to splash up and cause burns.

Pressca was designed to be easy to handle. If you are pressing too hard to brew your coffee or tea, follow these tips:

1. Wait for the indicated time: 2-4 minutes. The coffee grounds in suspension in the water make it hard to push the plunger.
2. Always open the lid before pressing the plunger.
3. Pull the plunger slightly up and press it down again. Repeating this will make the plunger go down gently.
4. Apply a slight twist clockwise while pressing the plunger.
5. Slightly tap the coffee maker on the table. This will help settle the coffee grounds and unblock the filter, making the plunger function gently.
6. Check if the plunger sealing ring (E) is well fitted and aligned at the bottom of the plunger. Otherwise you may have to press too hard and coffee may leak.

If you notice a leak at the base of the coffee maker, firmly tighten it.

#### CLEANING AND STORAGE



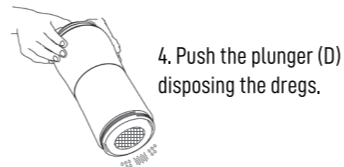
1. Open the lid (C).



2. With the plunger (D) fully pressed, make sure you have extracted as much liquid as possible.



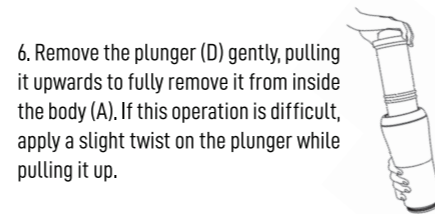
3. Open the body base (B).



4. Push the plunger (D) disposing the dregs.



5. Dispose the remaining dregs of the base (B).



6. Remove the plunger (D) gently, pulling it upwards to fully remove it from inside the body (A). If this operation is difficult, apply a slight twist on the plunger while pulling it up.



7. Unscrew and detach the filter and the lid from the plunger, by turning each one counterclockwise to disassemble.

8. Separate the 2 cups that form the body. Hold the outer cup supported on a table and press it down. The outer cup goes down and detaches from the inner cup.

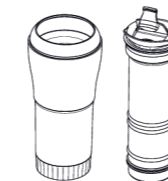


9. Wash all parts with mild soap or detergent and water and dry thoroughly.

It is not recommended to use too much detergent or soap to wash the sealing ring (E) of the plunger (D).

The natural oils of coffee are important for this sealing ring lubrication, which makes the plunger handling easier.

10. Remove and wash the filter (F) regularly to keep it sanitized and to avoid mold.



11. Store the plunger and the body separately. After washing and drying the parts, the sealing ring tends to lock into the plunger wall, making it difficult to remove it.

This will not affect use while making coffee or tea.

Not suitable for microwave or dishwasher.

If you are having trouble using PRESSCA, please contact our team. We will help.

pressca.com.br

+55 47 3521 9974

instagram.com/presscabr

facebook.com/pressca

#### RECIPES

Do you want to explore all that your Pressca has to offer? CHECK DELICIOUS RECIPES ON THE WEBSITE: [pressca.com.br](http://pressca.com.br)

+ 55 47 3521 9974

Email: [pressca@pressca.com.br](mailto:pressca@pressca.com.br)

[www.pressca.com.br](http://www.pressca.com.br)

Manufactured by:

CNPJ: 05.455.435/0001-44

Made in Brazil

#### WARRANTY

This warranty stipulates that the product is fully guaranteed against any manufacturing defects within 90 (ninety) days from the purchase invoice issue date.

This warranty shall be extinguished if the following occurs:

- a) If the defect is caused by misuse and non-compliance with the recommendations of the product user's manual.
- b) If the product suffers any damage caused by accidents or fall.

Aug 2022 / Man PRESSCA 008 en

#### PRESSCA®

Portable Coffee Maker and Tea Infuser

#### USER'S MANUAL

English

